



# GAT MONTHLY MEMBERSHIP PROGRESS REPORT

Results as of: 4/30/2023

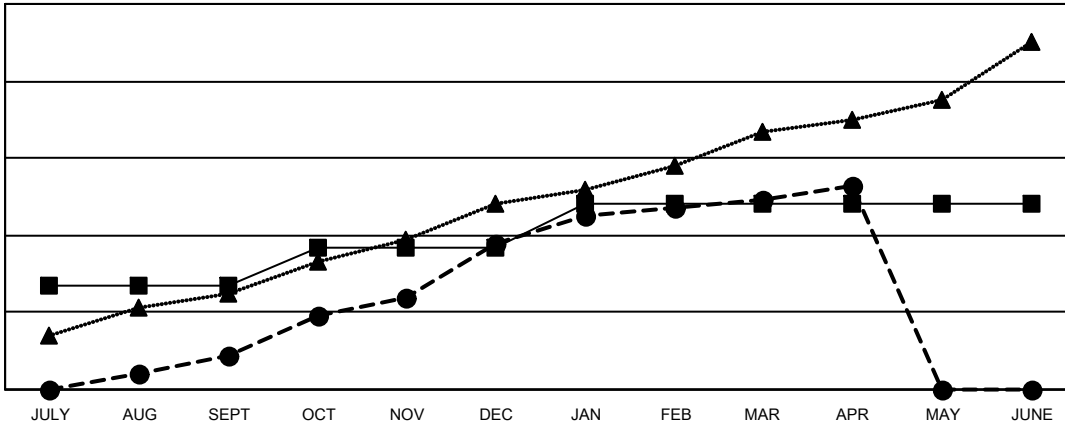
Multiple District 306

LOCATION: REP OF SRI LANKA

| Clubs                 |               |           |               |
|-----------------------|---------------|-----------|---------------|
| RESULTS FOR 2022-2023 |               |           |               |
| QUARTER               | NEW CLUB GOAL | NEW CLUBS | DROPPED CLUBS |
| JULY/AUG/SEPT         | 27            | 9         | 28            |
| OCT/NOV/DEC           | 10            | 29        | 3             |
| JAN/FEB/MAR           | 11            | 11        | 0             |
| APR/MAY/JUNE          | 0             | 4         | 0             |

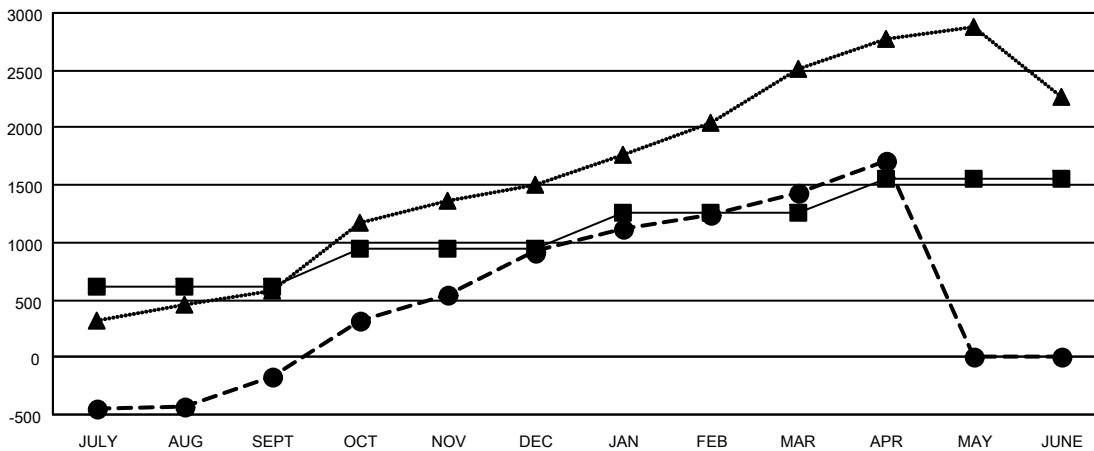
| Members               |                        |                      |  |
|-----------------------|------------------------|----------------------|--|
| RESULTS FOR 2022-2023 |                        |                      |  |
| QUARTER               | MEMBER GROWTH NET GOAL | MEMBER GROWTH ACTUAL | DROPPED MEMBERS ACTUAL (including transfers) |
| JULY/AUG/SEPT         | 610                    | 947                  | 1,019  |
| OCT/NOV/DEC           | 329                    | 2,156                | 963  |
| JAN/FEB/MAR           | 324                    | 787                  | 195  |
| APR/MAY/JUNE          | 290                    | 364                  | 59   |

GOALS AND ACTUAL NEW CLUBS CUMULATIVE



- - CURRENT YEAR GOALS FOR NEW CLUBS
- - CURRENT YEAR ACTUAL NEW CLUBS
- ▲ - LAST YEAR ACTUAL NEW CLUBS

GOALS AND ACTUAL MEMBERS CUMULATIVE



- - MEMBER GROWTH NET GOAL
- - MEMBER GROWTH ACTUAL
- ▲ - LAST YEAR MEMBERSHIP ACTUAL

|                          |   |  |
|--------------------------|---|--|
| <b>DROPPED CLUBS: 31</b> | 517 CLUBS OF 695 ADDED 1 OR MORE NEW MEMBERS              | <b>GENDER DISTRIBUTION</b>             |
| <b>DROPPED MEMBERS</b>   | <a href="#">CLICK HERE FOR CUMULATIVE MEMBERSHIP DATA</a> | MALE 13,999 (73.98%)                   |
| DECEASED 49              |   | FEMALE 4,924 (26.02%)                  |
| CLUB CANCELLED 462       |   | NON BINARY 0 (0.00%)                   |
| OTHER 1,728              |   | PREFER NOT TO ANSWER 0 (0.00%)         |
| <b>TOTAL 2,239</b>       |   | <b>TOTAL FAMILY UNIT MEMBERS 7,658</b> |
|                          |   | FAMILY MEMBERS PAYING HALF DUES 4,463  |